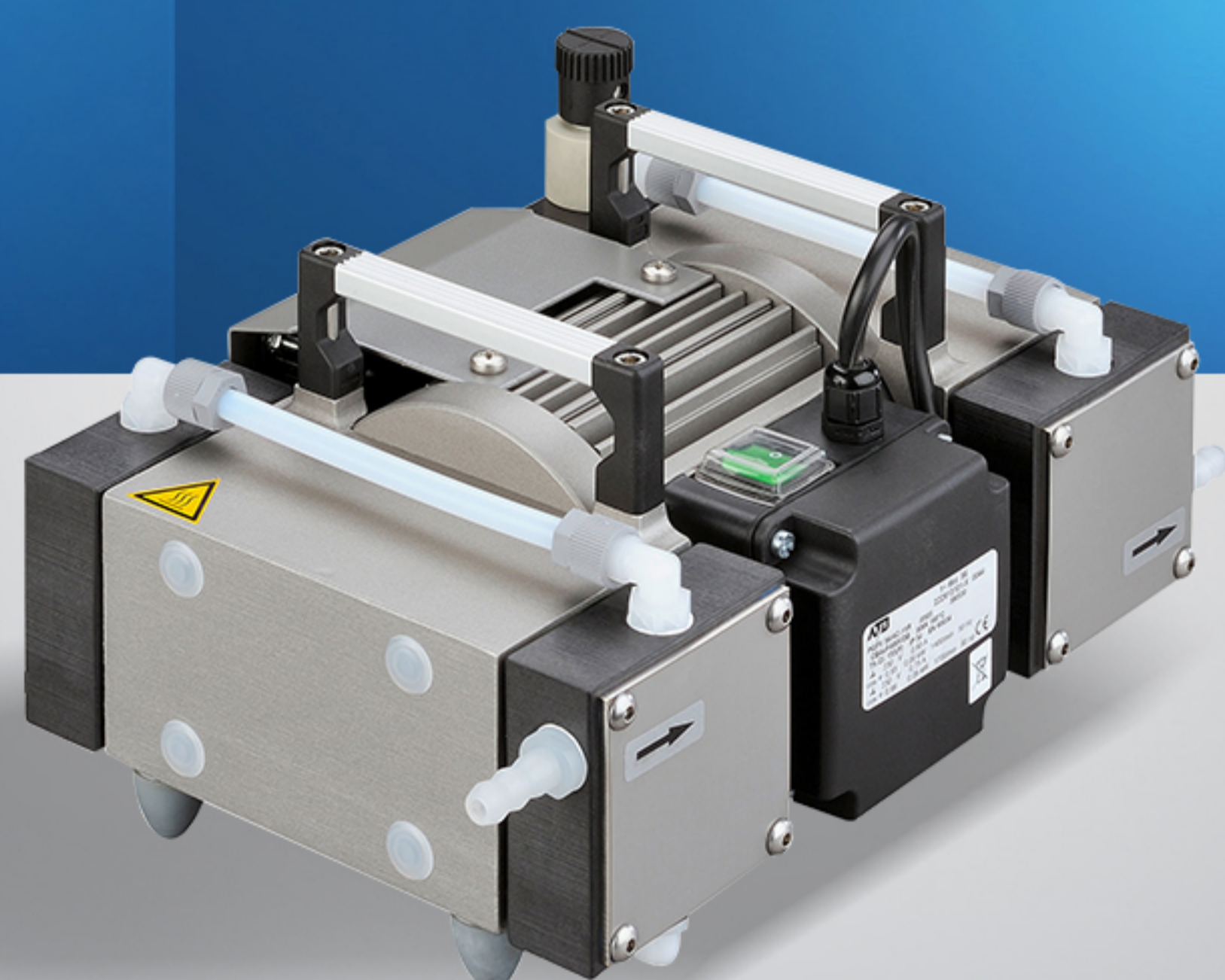


MPC201T

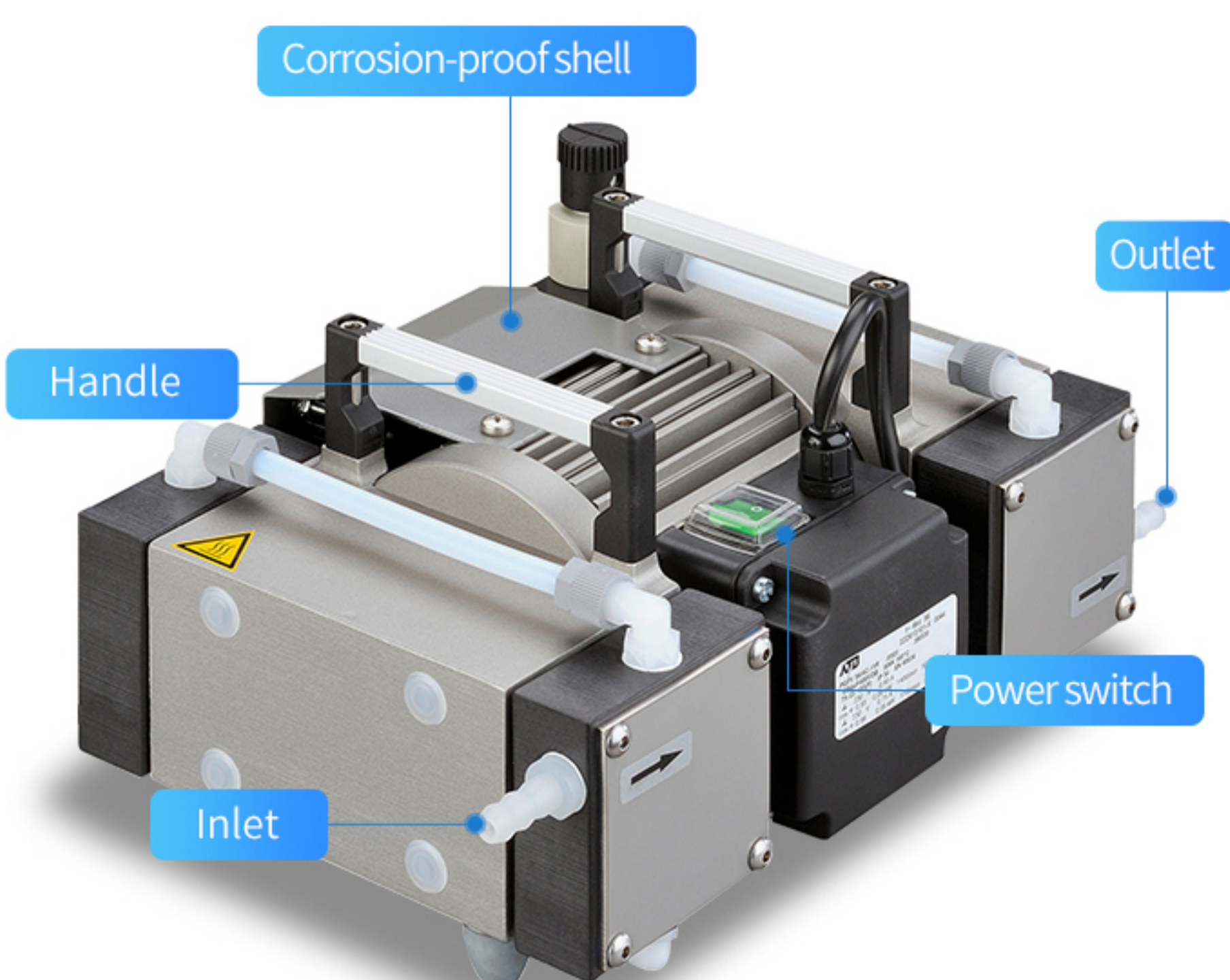
# DIAPHRAGM VACUUM PUMP

- No pollution
- Anti-corrosion
- Stable vacuum
- Long running



## INTRODUCTION

PTFE material, corrosion resistance



- Multi-layer Structure
- Source Factory
- Technical Support
- Support Customization

## PRODUCT PARAMETER

Various specifications are available

Model	Voltage (V)	Ultimate vacuum (mbar)	Flow rate	
			m <sup>3</sup> /h	L/min
MPC301Z	220	<8	2.3	38.3
MPC302Z	220	<5	2.6	43
MPC201T	220	<2	2.0	33.3
MPC601T	220	<2	3.9	65
MPC602T	220	<2	3.9	65
MPC1201T	220	<2	8.3	138

## PRODUCT DETAILS

Source manufacturer, quality assurance

**PTFE Material**

**01**

All parts in contact with gas are made of PTFE and reinforced with carbon fiber, which fully guarantees the chemical resistance of the pump.

**Chemical Corrosion Resistance**

**02**

MPC series vacuum pumps are dry-running vacuum pumps with good resistance to chemical corrosion.

**Multi-layer Structure**

**03**

The diaphragm pump adopts a multi-layer structure design to increase the willfulness and strength of the diaphragm.

**Stable Vacuum**

**04**

Stable vacuum, easy to control, small size, can run uninterrupted for a long time.

## PRODUCT DISPLAY

A variety of models are available



## PRODUCT APPLICATION

Vacuum distillation, suction filtration, concentration, drying



## USAGE SCENARIOS

Vacuum distillation, suction filtration, concentration, drying

